



# AN ODE TO WOOD OF THE REGION

## FIRST PRIZE | RAGGAL TOWN HALL

The Raggal town hall bends down the slope but it does not block the view to the Grosse Walsertal valley. Its primary functions — tourism office, administration and waiting room — are located on one floor which is of great advantage in terms of function and economy. The sheet metal roof rises above the conference room on the top floor on the north-west corner, and the archive and technical facilities are accommodated below the main floor on the slope as is the rehearsal room which has a separate entrance and offers a splendid view; it is used by the village brass band.

Raggal is situated in a biosphere reserve 1015 metres above sea level. During the construction of the town hall, regional carpenters and joiners processed fir and spruce trees from the town's own forests. The architect had lists and drawings for the wood, the use of all parts of the round logs was planned with great care to avoid waste. Allocation of the wooden parts was possible because of the 6 cm beams which determine the entire construction: shaped like a fan from the top to the bottom,

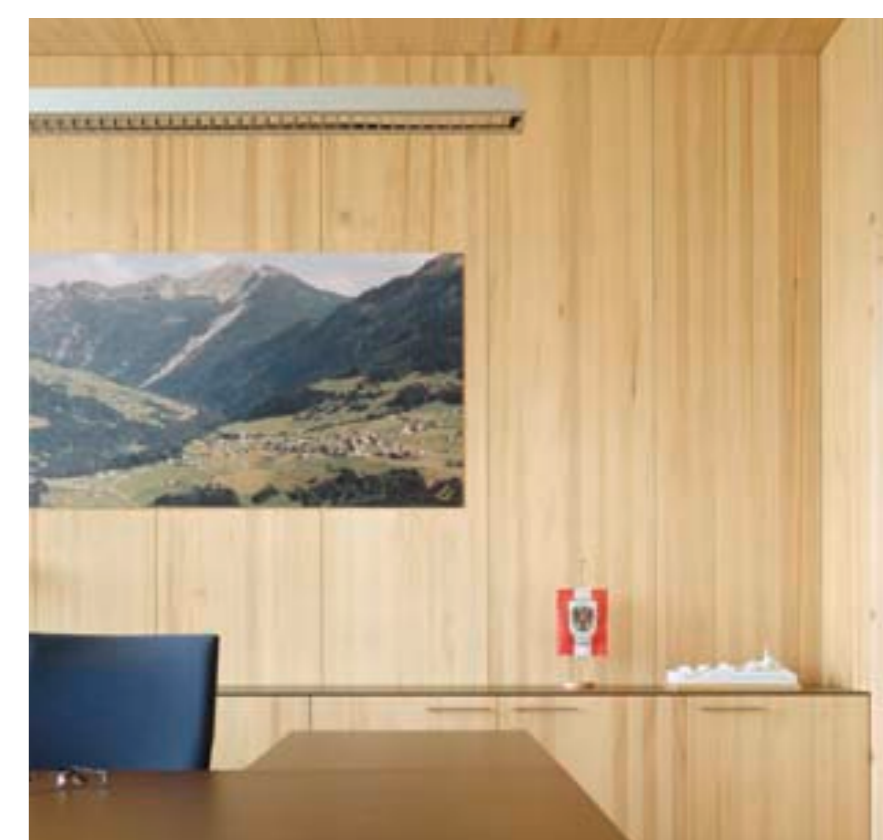
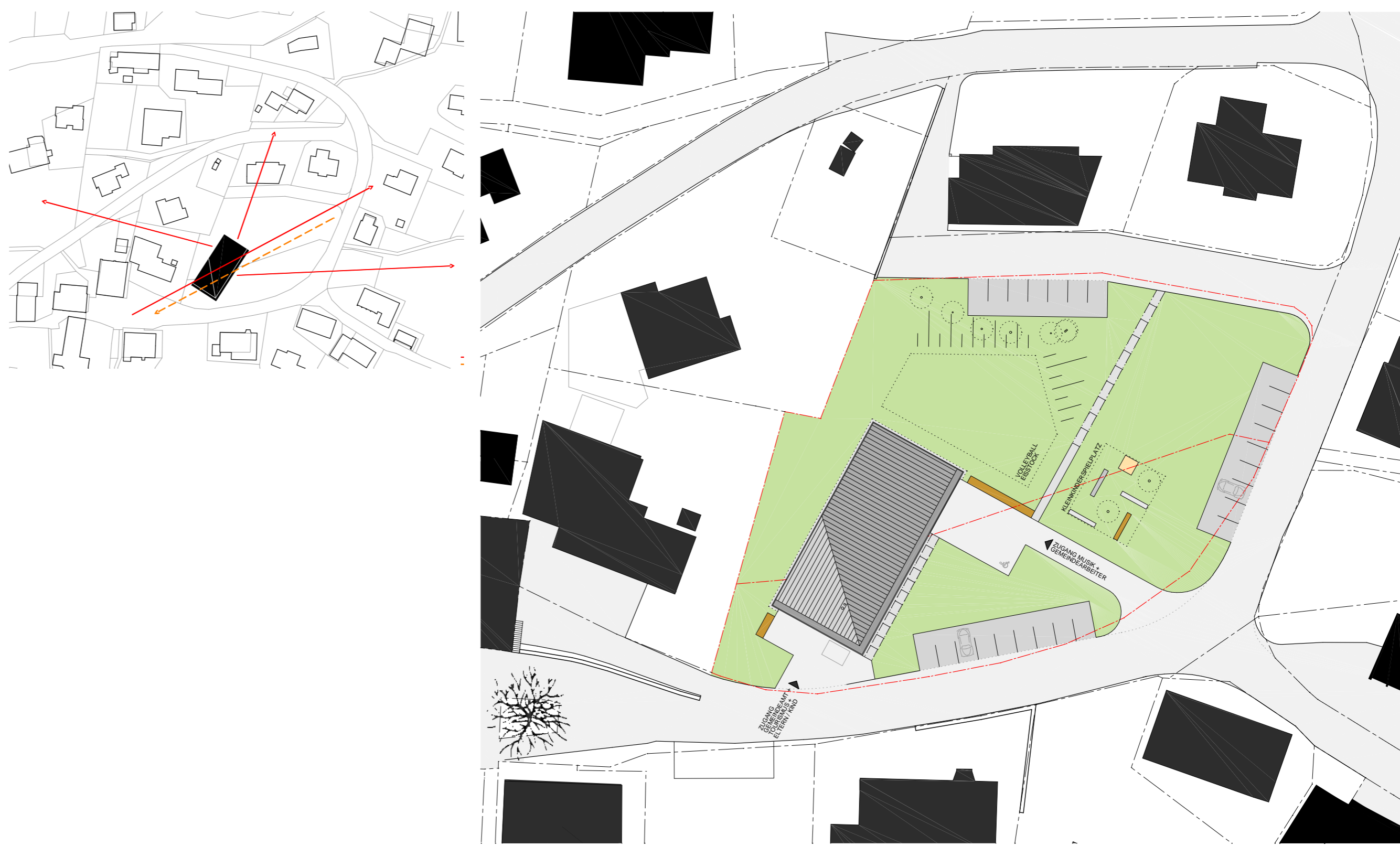
close together at the top and then opening up. There is a 6 cm space between the rafters, the posts on the top floor stand 60 cm apart, the space between the ones on the ground floor is 2.40 m. The inside walls and the cabinet doors are made of thin, perfectly shaped silver fir panels. No semi-finished products were used except for the furniture.

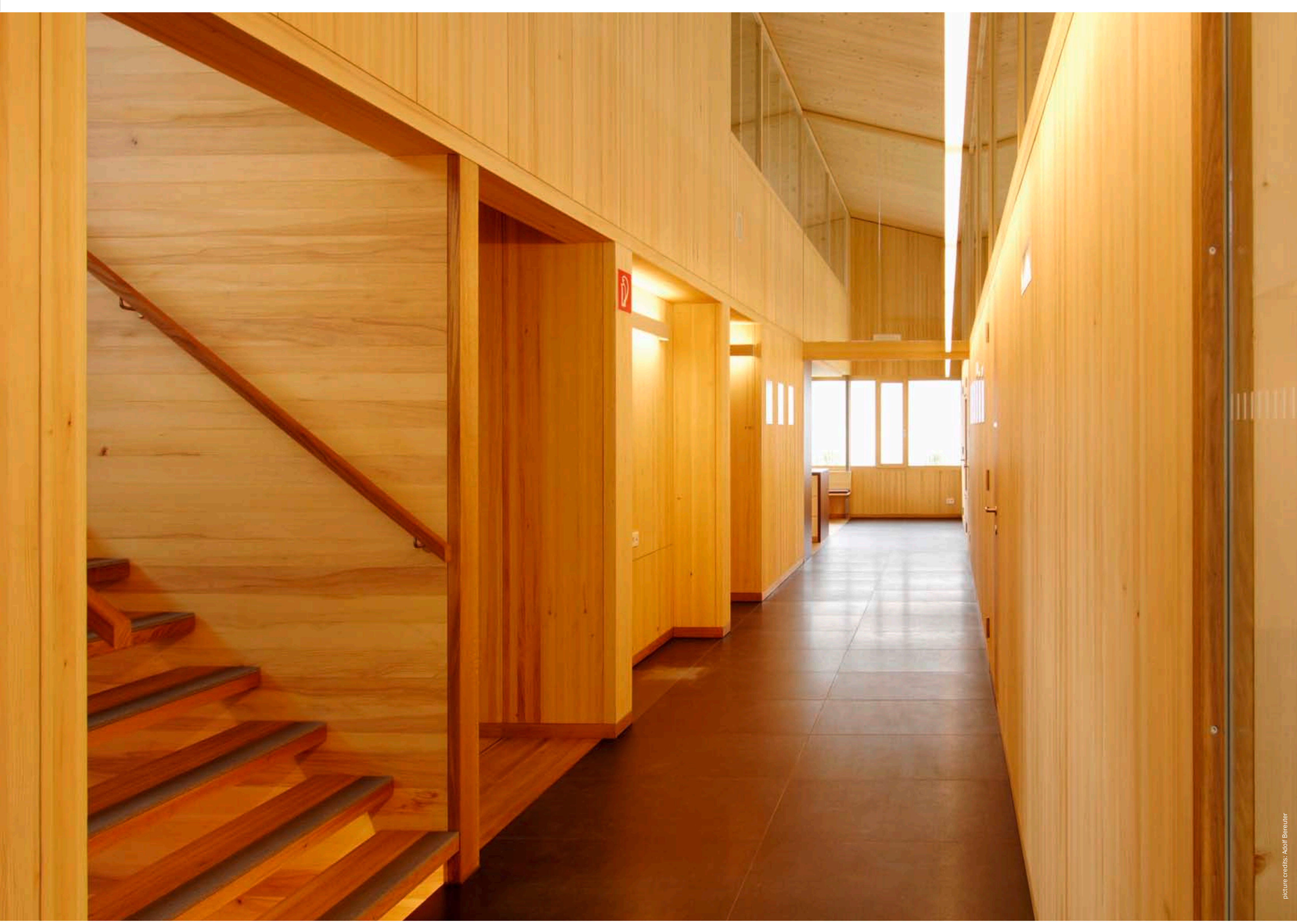
Insulation and ventilation are in line with today's "passive house" standards. Owing to the large conference room windows facing north-west and offering a splendid view down into the valley, the building does not quite fulfil "passive house" criteria. The woodchip heating system in the basement heats the entire building as well as seven neighbouring buildings.

13

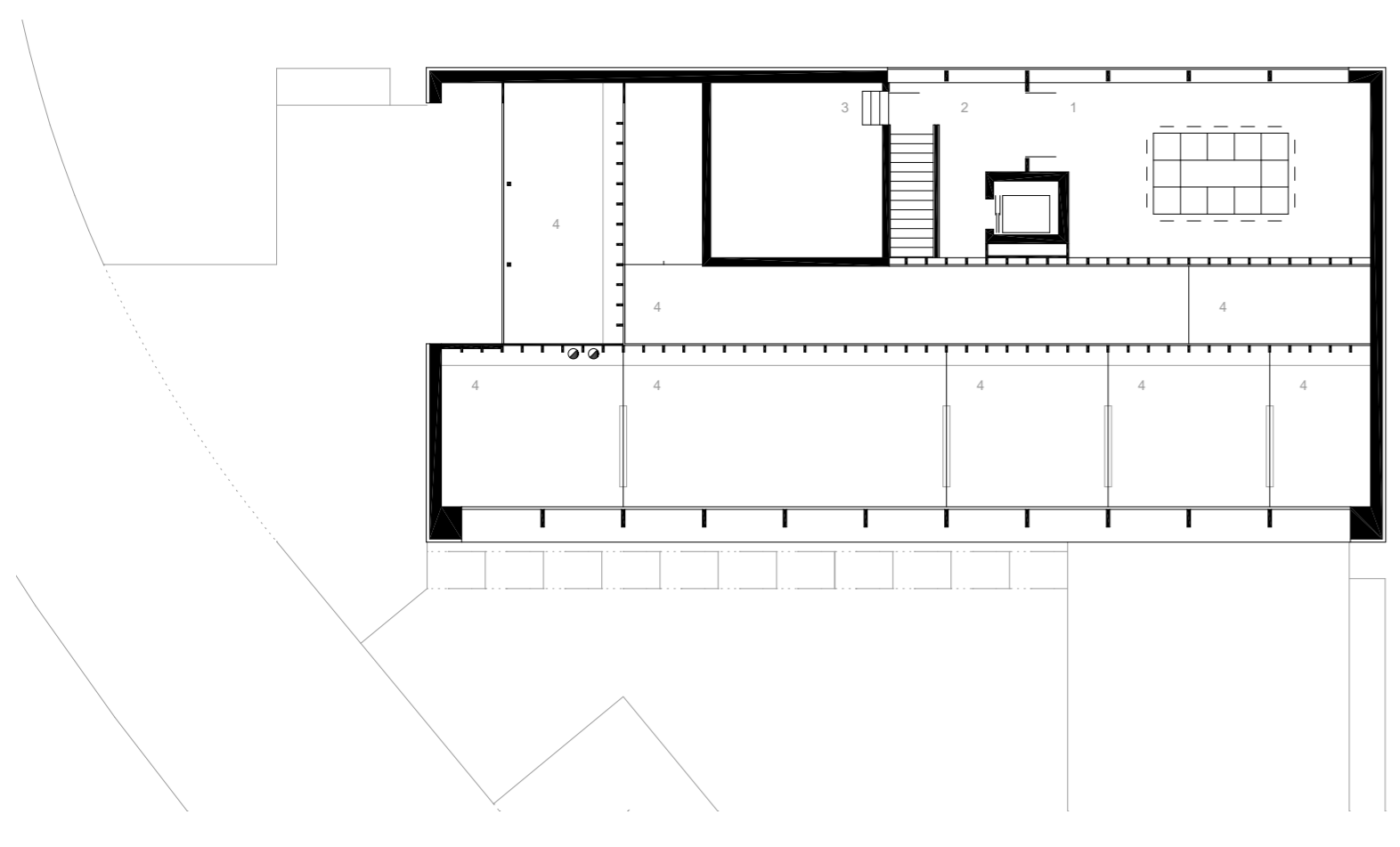
RAGGAL TOWN HALL, 2006  
Raggal 220, A-Raggal

Principals: Gemeinde Raggal  
Architecture: Johannes Kaufmann, Dornbirn  
Type of commission: Competition 2005  
Timber construction engineer: Merz Kley Partner, Dornbirn  
Utilities management: Planungsteam E-Plus, Egg  
Total costs: EUR 1.65 Mio.  
Building costs: EUR 1368.- / m<sup>2</sup>  
Energy key: ca. 22 kWh / m<sup>2</sup>a

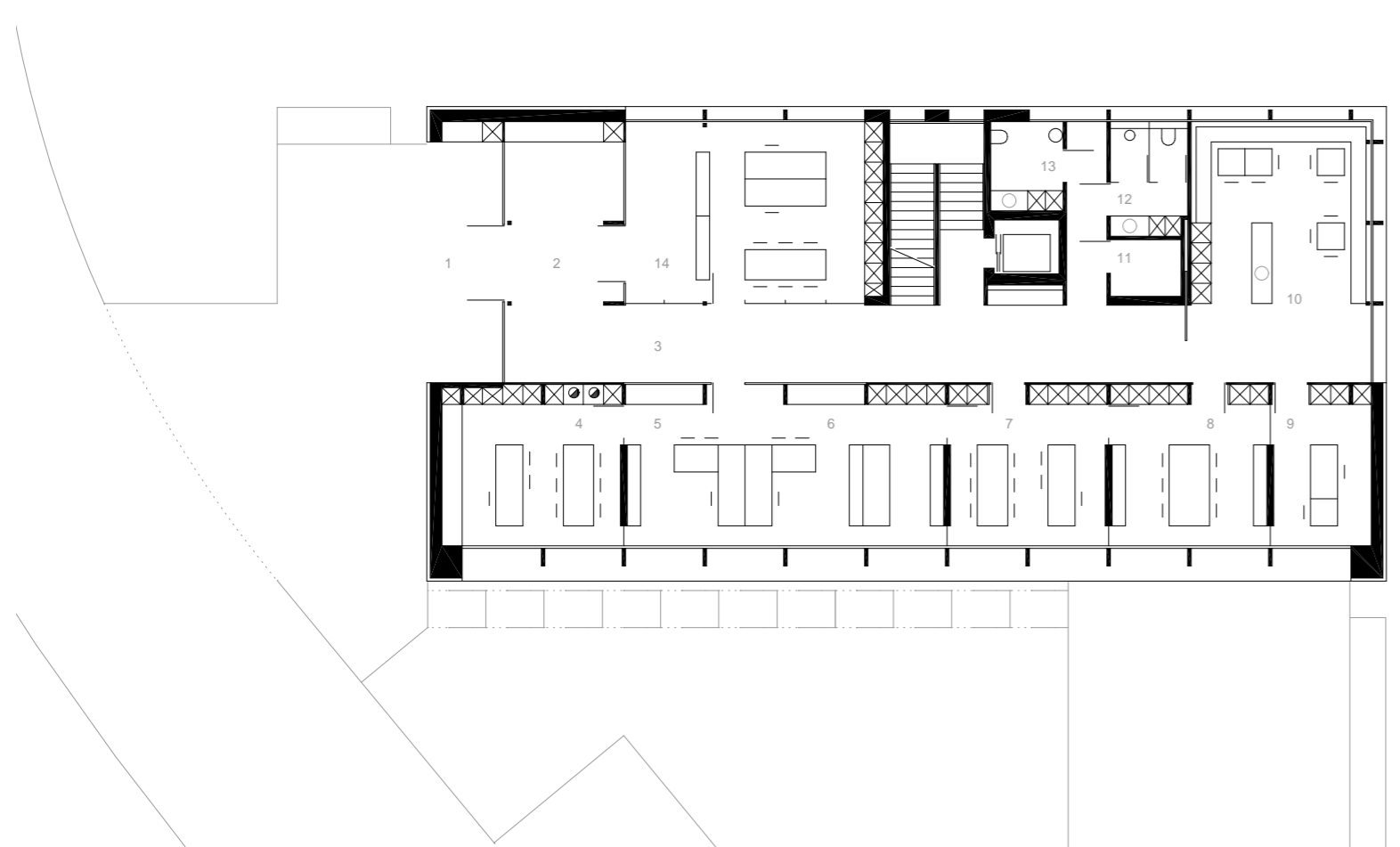




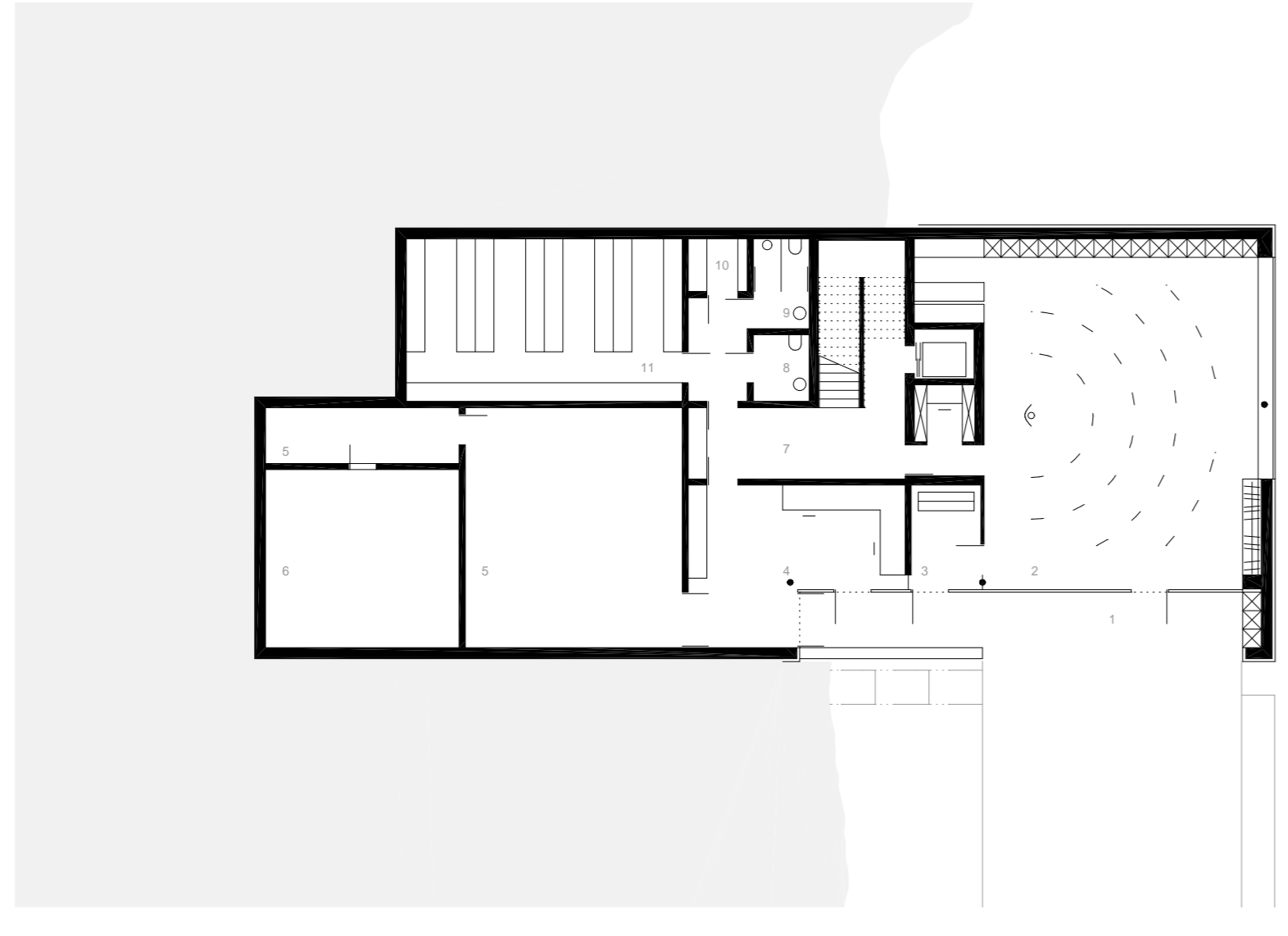
picture credits: Apoll Bereuter



- 1 Sitzung
- 2 Gang
- 3 Aktiv
- 4 Lüftung



- 1 Zugang
- 2 Foyer
- 3 Gang
- 4 Gemeindefestzelt
- 5 Bücherei
- 6 Buchausleiher
- 7 Büro
- 8 Reservierung
- 9 Eltern-Kind Beratung
- 10 Werkstatt
- 11 Technik
- 12 WC H
- 13 WC OB
- 14 Tourismus



- 1 Zugang
- 2 Foyer
- 3 Musikschule
- 4 Gemeindefestzelt
- 5 Technik
- 6 Buchausleiher
- 7 WC H
- 8 WC OB
- 9 Pult
- 10 Aktiv
- 11 Aktiv

