



SALT AND SUN

THIRD PRIZE | IM BÄCHLI HOUSING ESTATE

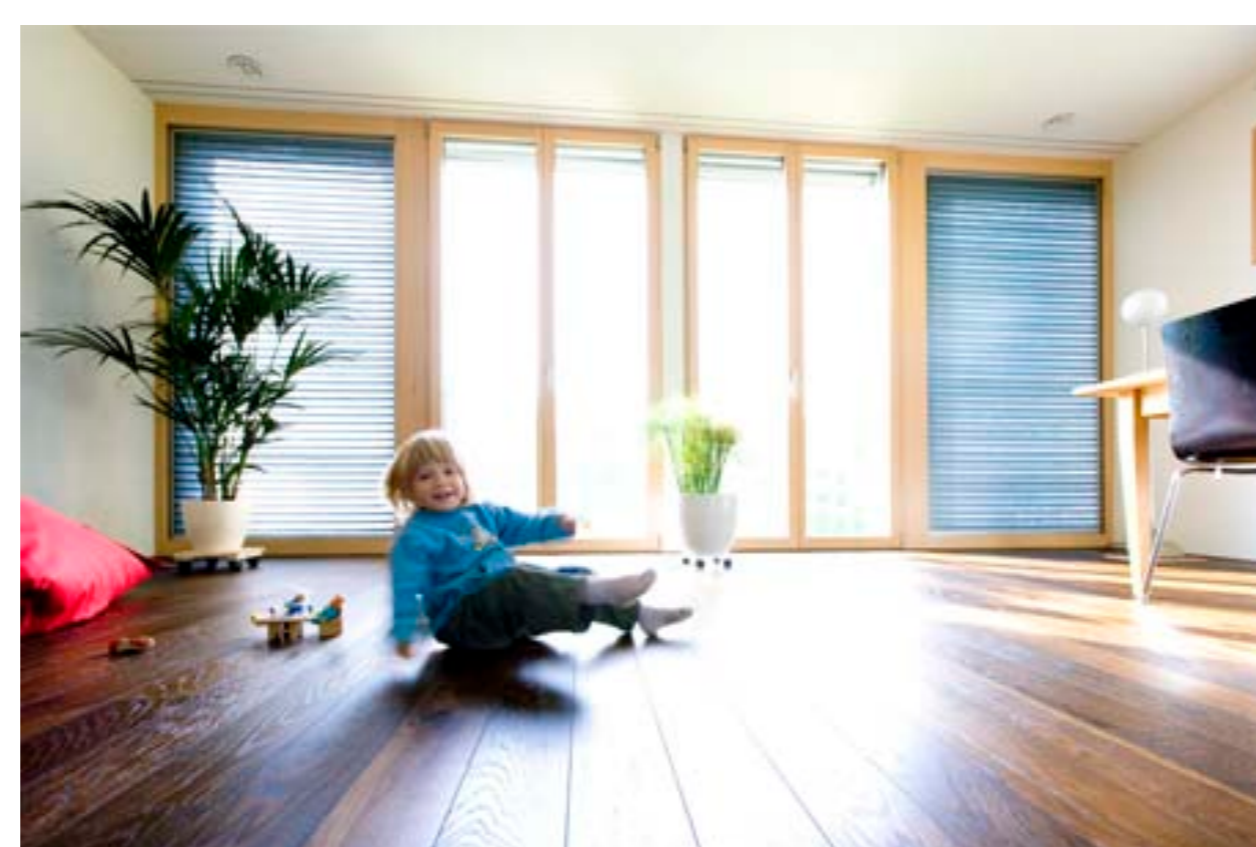
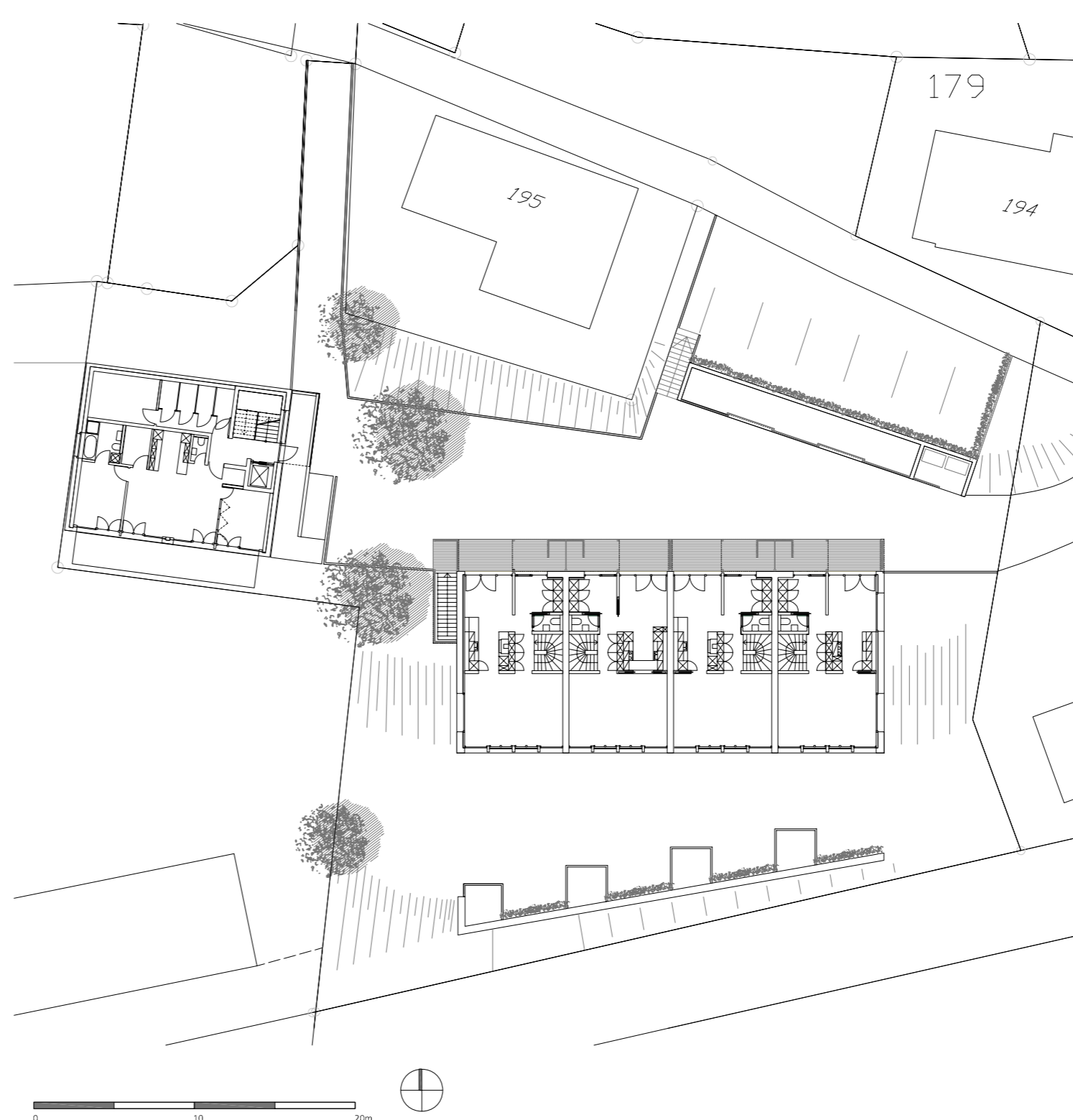
The terraced houses in the lower part of the building project have large windows on the ground floor which open towards the private courtyard. Half-open entrance pavilions with storage rooms border both houses, breaking up the dimensions. The wooden post construction of both houses rests on concrete foundations, housing a garden floor in the terraced houses and an underground garage below. The energy concept: waste heat from the highly insulated, air-tight rooms is used to heat the water. Solar collectors and a photovoltaic system are fixed to the roof. GlassXcrystal panels on the fully open south side store the solar heat and deliver it inside. The translucent salt crystals of the façade elements developed by the architect become trans-

parent when it is warm. Built-in prism glass only let flat rays into the room. The housing project is a prime example of the intelligent use of the sun and of a sensible agglomeration of village building structure with the courtyard serving as the social centre of the residential community.

07

IM BÄCHLI HOUSING ESTATE, 2008
Bächlistrasse 2771-2774, CH-Teufen

Principals: Sinnergie, St. Gallen
Architecture: Dietrich Schwarz, Zürich
Type of commission: Direct commission, 2004
Civil engineer: SJB Kempter Fitze, Herisau
Energy and utilities management: IG Energietechnik Jäger & Haltiner, St. Gallen
Total costs: ca. EUR 4,6 Mio.
Building costs: EUR 2024.-/ m²
Energy key: 13,2 and 11,7 kWh / m²a





picture credits: Glassix

